

# 3 Labour

The conceptual framework adopted by the ABS for collecting labour force statistics (as shown in figure 6 on page 41) is compatible with the standards for labour force classification recommended by the International Labour Organisation (ILO).

## Employment and unemployment

In August 1988 there were 1,935,500 employed persons in Victoria. This represented 58 per cent of the civilian population aged 15 years of age and over and 26 per cent of employed persons across Australia. A total of 115,300 Victorians were unemployed in August 1988, a decrease of 5 per cent over the year. This unemployment rate of 5.6 per cent of the labour force compared with an Australian average unemployment rate of 6.8 per cent. The Victorian unemployment rate varied markedly within the State. In the Melbourne Statistical Division it was highest in North Western Melbourne (7.3 per cent) and lowest in Outer Eastern Melbourne (2.6 per cent). In country Victoria it ranged between 9.4 per cent in Western Victoria and 6.8 per cent in Eastern Victoria.

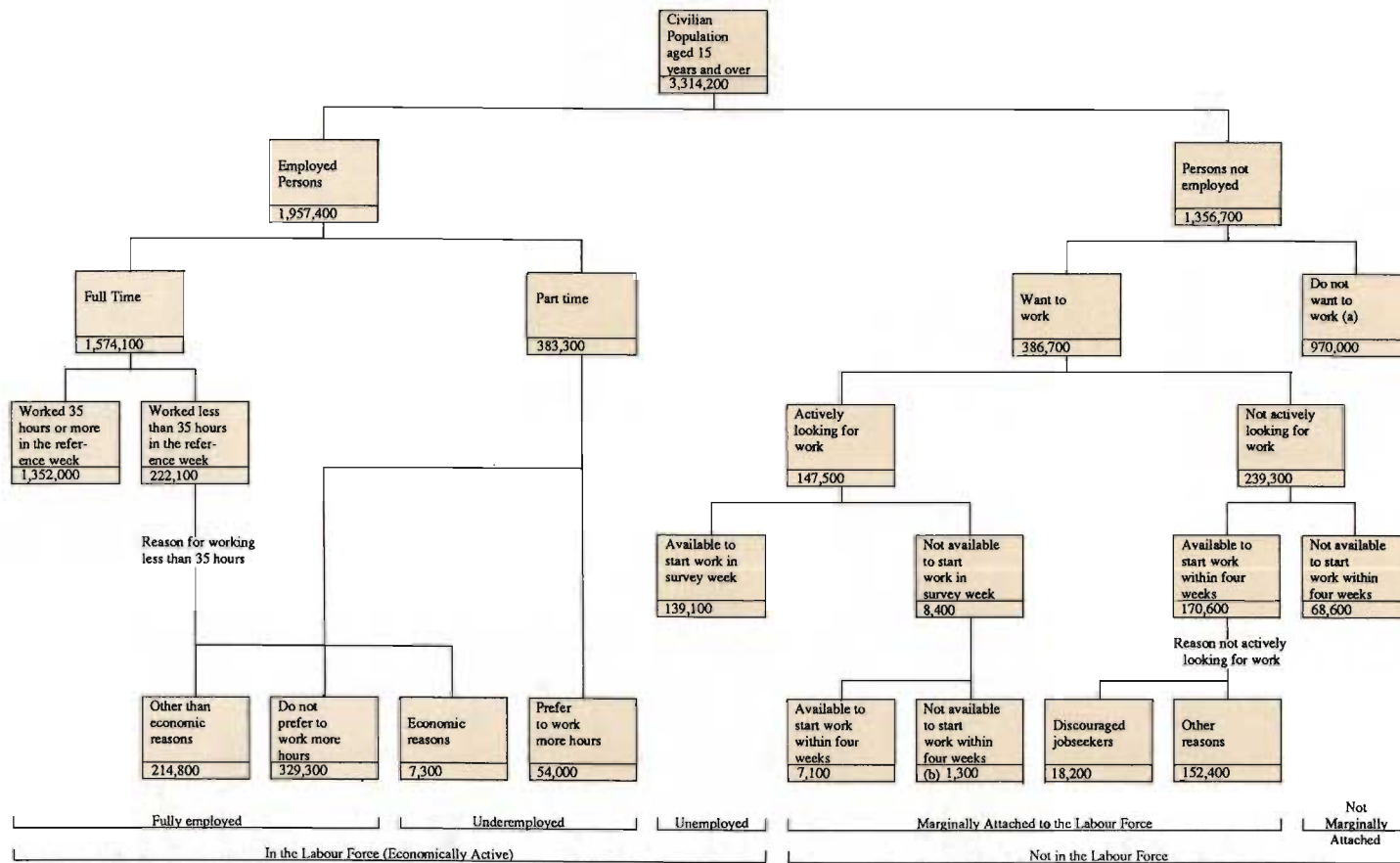
Since the mid 1960's the Victorian unemployment rate has been generally lower than the National unemployment rate. During the early 1980's the seasonally adjusted unemployment rate increased from just below 6 per cent to a peak of over 9 per cent in 1983. Since 1983 there has been a sustained decline in the unemployment rate.

## Youth unemployment

For a number of years, the labour force characteristics of teenagers, particularly the unemployment rate, have attracted considerable interest. In particular there have been some mistaken inferences that the teenage unemployment rate reflects the teenage unemployed as a percentage of all teenagers. It has also been suggested that the teenage unemployment rate is misleading because it takes no account of whether teenagers who are classified as unemployed attend educational institutions.

All the unemployment rates published by the ABS are calculated using ILO recommendations. While these recommendations may have their critics, they are used by the vast majority of Western countries thus allowing reasonable international comparisons. Further, as the rates are strictly defined in terms of the components of the labour force, rates for various population groups (which may differ on a range of social and demographic characteristics) can be compared on a constant basis.

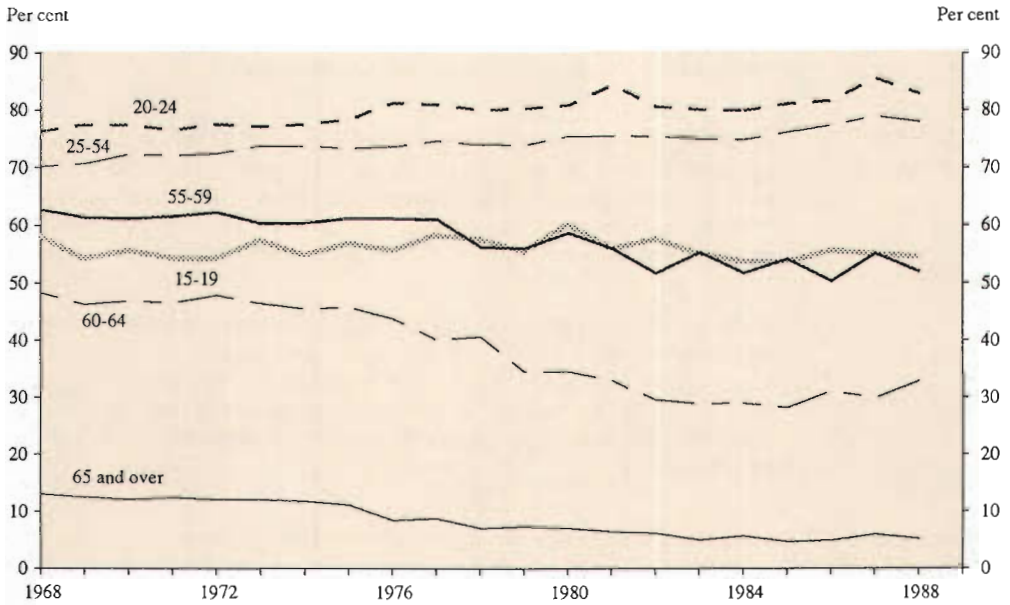
Table 3.4 on page 47 shows the various characteristics of the unemployed persons aged 15 to 19 years in August 1988.



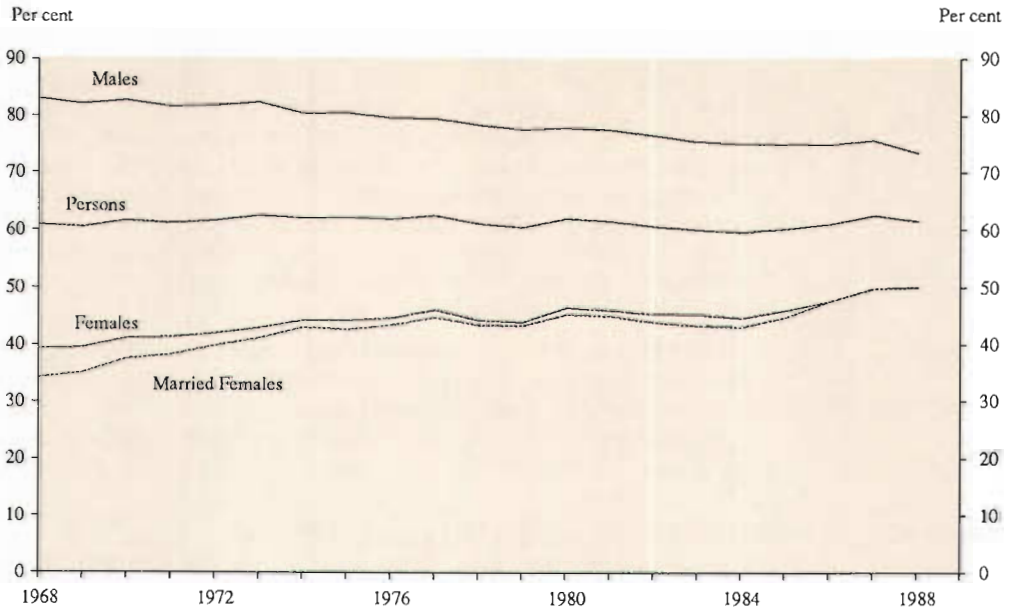
(a) Includes institutionalised boarding school pupils and persons permanently unable to work.  
 (b) Subject to sampling variability too high for most practical purposes.

- Participation rate** In the last twenty years the movement in participation rates varied according to age. The participation rates of the young population (under 20 years) and the older age groups (55 years and over) have declined. During the same period however the participation rates for people in the 20 to 54 year age group have risen markedly.
- During the last twenty years women have played an increasingly significant role in the labour force. The participation rate for all females has risen from 39.4 per cent to 50.0 per cent while the rate for married females has risen from 34.3 per cent to 50.1 per cent. Over the same period the rate for males has dropped from 83.1 per cent to 73.5 per cent.
- Labour mobility** In Victoria, 1,915,600 persons were employed in February 1987. Of those employed persons, 465,700 had been in their current job less than twelve months, while 477,400 had been there for 10 years or more.
- Labour force status and educational attainment** In Victoria, as at February 1988, 1,183,400 persons had post-school qualifications and 1,949,900 did not have post-school qualifications. Of the persons who had post-school qualifications, 22.1 per cent held a degree, 34.3 per cent possessed trade or apprenticeship qualifications and 43.0 per cent held a certificate or diploma. Persons with post-school qualifications experienced an unemployment rate of 3.9 per cent compared with 8.1 per cent for those without post-school qualifications.
- Transition from education to work** In Victoria, an estimated 535,500 persons aged 15 to 65 attended an educational institution in 1986. Of these, 262,300 (49.0 per cent) were attending school. A majority of the people who had attended school in 1986 (178,900) were still attending school at May 1987. Of the remainder, 33,800 were attending tertiary institutions and 49,600 were not attending an educational institution at May 1987.
- Education and work are combined in apprenticeships. In May 1987 there were 42,300 apprentices in Victoria. Of these, 71.6 per cent were aged 15-19 and 28.4 per cent were aged 20-34. Almost half the apprentices (47.5 per cent) were employed in the building, metal and electrical trades.
- Labour force experience** In Victoria, during the twelve months ending February 1987, there were 2,217,700 persons who had been in the labour force at some time. Of these, 64.8 per cent had worked for the whole period and 29.6 per cent had worked for part of that period. Of the 385,100 persons who looked for work at some time during the year, 11.4 per cent persons had looked for work for the whole twelve months.
- Persons not in the labour force (including discouraged jobseekers)** In March 1988 there were an estimated 1,217,600 persons aged 15 and over who were not in the labour force in Victoria. These people constituted 36.7 per cent of the civilian population. The number of persons who were discouraged jobseekers was 18,200. The majority of discouraged jobseekers had previous work experience. Most discouraged jobseekers had not looked for work within the last twelve months, with only 28.6 per cent having done so.
- Alternative working arrangements** During the period September to November 1986 in Victoria, some 1,354,200 employees had a permanent job and 281,700 employees worked in casual employment in their main job. Nearly all (90.1 per cent) of the employees working in permanent employment preferred that form of employment while

**PARTICIPATION RATES BY AGE, VICTORIA  
(August)**



**PARTICIPATION RATES BY SEX, VICTORIA  
(August)**



38.2 per cent of all casual employees preferred to work on a permanent basis. Females made up 64.5 per cent of all casual employees and more than half of those females (56.3 per cent) preferred to remain in casual employment. While casual work is often associated with part-time hours, significant numbers of casual employees work full-time hours. In Victoria, 30.7 per cent of casual employees usually worked 35 hours or more per week.

### Industry and occupation

Since 1983 the number of employed wage and salary earners in Victoria has increased by 15.2 per cent. Most industries showed an increase with two notable examples being Finance, property and business services rising by 47.9 per cent and Community services increasing by 20.4 per cent. The largest decrease was recorded for the Agriculture, forestry, fishing and hunting division, down 16.3 per cent.

In August 1988, 40 per cent of people employed in the Community services division were professionals while only 3 per cent of persons in the Wholesale and retail division were classified as professional. In the Manufacturing division just on 44 per cent of employed persons were plant operators or labourers while in the Construction division the corresponding figure was just over 22 per cent.

### Earnings and hours

Since 1983, the average weekly hours worked by employed wage and salary earners in Victoria has changed minimally. However the average weekly hours worked vary markedly by industry. The highest average of just under 40 hours per week was worked by employees engaged in the manufacture of metal products. At the other end of the scale, average hours per week in the Retail trade subdivision were just under 30 which reflects the greater usage of casual and part-time employees.

Full-time employees in the Mining division recorded the highest average weekly earnings in February 1988, while the lowest average was recorded for employees in the Manufacturing subdivisions of Textiles, clothing and footwear. The overall average for the Manufacturing division was close to the all industries average; average weekly earnings across Manufacturing subdivisions varied widely from the lowest to the second highest. Average earnings for employees in the Basic metal products subdivision were 50.4 per cent higher than those of employees in the Textiles, clothing and footwear subdivisions. Average weekly earnings for females were consistently lower than the average for males. However, the size of the difference varied markedly by industry division. The difference was greatest in the Manufacturing division where average weekly earnings for females represented 68.6 per cent of the male average.

In August 1987, only 8.4 per cent of wage and salary earners aged 15 to 19 years earned in excess of \$320 per week, while 49.9 per cent of wage and salary earners aged 20 to 24 years earned more than \$320 per week. Of the 154,500 employees earning \$600 and over per week, 65.2 per cent were aged 25 to 44 years.

### Labour costs

In Victoria, the total annual major labour costs (excluding severance, termination and redundancy payments) per employee averaged \$20,736 in 1986-87. Of this, \$18,705 (90.2 per cent) consisted of gross wages and salaries. The remaining labour costs comprised payroll tax (3.9 per cent), workers compensation (2.1 per cent), superannuation (3.2 per cent) and fringe benefits tax (0.6 per cent).

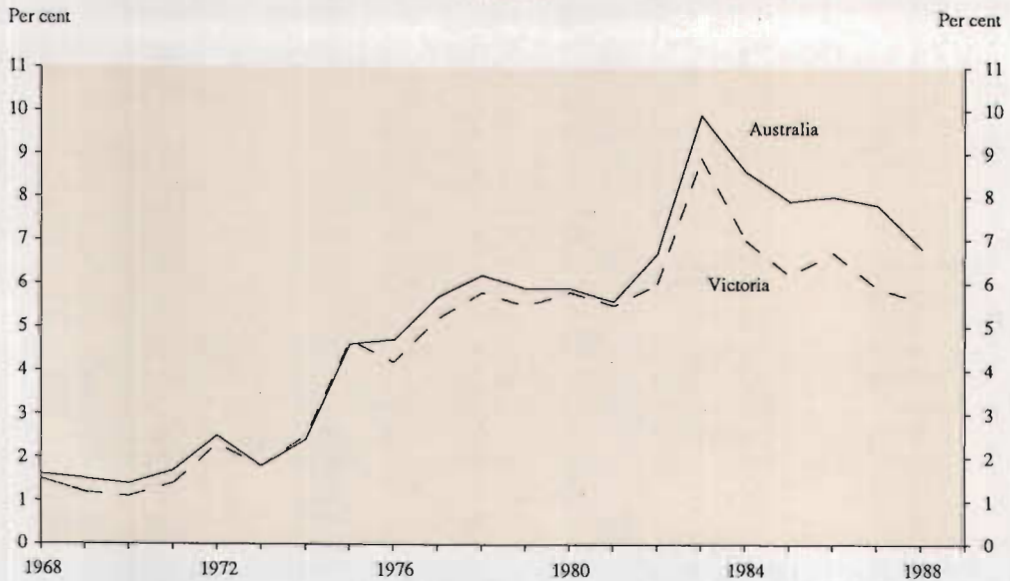
TABLE 3.1 EMPLOYED PERSONS, BY AGE, VICTORIA  
('000)

Month	Age group (years)								Total	
	15-19	20-24	25-34	35-44	45-54	55-59	65 and 60-64	over		
MALES										
1987 -	June	94.4	152.1	310.6	277.4	183.5	75.1	40.1	22.0	1,155.2
	July	99.4	152.0	308.6	278.7	186.6	73.4	41.7	20.7	1,160.9
	August	89.8	152.6	311.7	281.3	187.2	73.2	41.0	18.4	1,155.3
	September	89.2	147.5	312.5	280.8	181.0	73.2	37.8	21.6	1,143.7
	October	86.3	146.2	313.5	281.6	183.3	71.6	40.3	20.4	1,143.1
	November	89.6	141.5	312.0	282.3	181.9	71.7	40.5	20.0	1,139.6
	December	104.3	148.4	311.8	286.5	184.6	71.5	44.9	18.8	1,170.9
1988 -	January	97.5	149.4	310.5	284.7	184.4	68.2	44.1	18.4	1,157.1
	February	94.4	150.9	312.1	285.0	184.6	69.8	46.5	17.1	1,160.4
	March	98.3	147.6	311.8	287.0	187.4	71.3	45.9	19.4	1,168.8
	April	97.1	149.0	313.9	288.7	188.3	68.8	45.3	20.9	1,172.1
	May	92.8	146.5	312.5	287.7	189.5	67.4	45.7	19.5	1,161.6
	June	93.9	144.5	313.7	283.8	190.1	72.7	46.7	19.6	1,164.9
	July	94.6	145.9	311.2	288.4	189.0	69.8	46.9	19.0	1,164.8
	August	88.4	142.9	308.7	288.0	186.2	68.8	45.5	17.4	1,145.9
FEMALES										
1987 -	June	79.3	127.6	211.7	192.9	106.6	32.0	15.7	7.7	773.5
	July	86.1	130.1	210.2	193.2	112.1	32.5	12.0	8.5	784.6
	August	78.1	125.1	212.4	193.4	112.7	32.7	12.4	9.0	775.9
	September	85.3	125.6	216.9	191.4	113.8	30.6	13.0	7.5	784.2
	October	85.7	127.6	215.2	194.7	110.5	26.6	13.6	10.6	784.6
	November	90.3	130.6	212.5	193.7	112.5	23.7	13.2	11.8	788.3
	December	95.2	137.2	212.6	194.7	110.3	24.6	13.7	10.2	798.5
1988 -	January	83.2	131.1	204.1	186.9	105.6	24.5	12.2	8.5	756.2
	February	77.2	131.6	203.6	198.0	108.3	24.0	14.2	9.0	765.8
	March	85.7	129.9	206.8	204.3	110.3	27.6	14.0	10.1	788.7
	April	89.5	125.4	208.0	201.3	112.2	27.6	13.0	10.1	787.0
	May	88.0	126.5	205.7	204.3	109.9	26.3	11.6	6.7	779.0
	June	87.6	121.4	210.9	203.1	112.6	28.7	13.3	6.0	783.7
	July	84.5	124.2	218.0	197.3	112.5	27.4	12.5	7.5	783.8
	August	81.7	124.3	212.4	207.9	115.0	28.5	13.1	6.7	789.7
PERSONS										
1987 -	June	173.7	279.6	522.2	470.3	290.1	107.2	55.8	29.8	1,928.7
	July	185.5	282.1	518.8	471.8	298.6	105.9	53.6	29.2	1,945.5
	August	167.9	277.7	524.1	474.7	299.9	105.9	53.4	27.4	1,931.2
	September	174.5	273.1	529.4	472.2	294.9	103.8	50.8	29.1	1,927.9
	October	172.0	273.8	528.7	476.3	293.8	98.2	53.9	31.0	1,927.7
	November	179.9	272.1	524.5	476.0	294.4	95.4	53.7	31.8	1,927.9
	December	199.4	285.6	524.4	481.2	294.9	96.1	58.6	29.1	1,969.4
1988 -	January	180.7	280.5	514.6	471.6	290.0	92.6	56.3	26.9	1,913.3
	February	171.6	282.5	515.7	483.0	292.9	93.8	60.8	26.1	1,926.3
	March	184.0	277.5	518.6	491.3	297.8	98.9	59.9	29.5	1,957.4
	April	186.6	274.4	521.8	490.0	300.5	96.4	58.3	31.0	1,959.0
	May	180.8	273.0	518.3	492.0	299.4	93.7	57.3	26.2	1,940.6
	June	181.5	265.9	524.6	486.9	302.8	101.4	60.0	25.6	1,948.6
	July	179.2	270.1	529.2	485.7	301.5	97.2	59.4	26.4	1,948.6
	August	170.1	267.2	521.1	495.9	301.2	97.3	58.6	24.1	1,935.5

**TABLE 3.2 UNEMPLOYED PERSONS: WHETHER LOOKING FOR FULL-TIME OR PART-TIME WORK, VICTORIA**  
(\*'000)

August	Males			Females			Persons			Unemployment rate per cent
	Looking for full-time work	Looking for part-time work	Total	Looking for full-time work	Looking for part-time work	Total	Looking for full-time work	Looking for part-time work	Total	
1968	7.7	*2.6	10.2	6.5	4.9	11.4	14.2	7.5	21.6	1.5
1969	7.6	*0.3	7.8	6.2	*3.4	9.6	13.8	*3.7	17.4	1.2
1970	7.9	*0.6	8.4	4.2	*3.4	7.5	12.0	*3.9	16.0	1.1
1971	10.2	*1.8	11.9	6.1	*3.4	9.5	16.3	5.2	21.4	1.4
1972	17.5	*2.4	20.0	10.8	6.6	17.5	28.4	9.1	37.4	2.3
1973	7.8	7.2	15.0	8.8	5.3	14.1	16.6	12.4	29.0	1.8
1974	15.9	*2.1	18.0	17.3	6.0	23.3	33.2	8.1	41.3	2.5
1975	29.9	7.1	37.0	27.3	14.8	40.9	57.2	20.8	77.9	4.7
1976	27.9	7.3	35.2	23.3	12.1	35.4	51.2	19.4	70.6	4.2
1977	34.4	7.5	41.9	30.4	17.7	48.1	64.8	25.2	90.0	5.2
1978	47.6	4.1	51.7	34.1	15.0	49.1	81.7	19.0	100.8	5.8
1979	46.1	*3.4	49.4	31.5	14.8	46.3	77.6	18.1	95.7	5.5
1980	49.1	4.1	53.1	38.0	12.8	50.8	87.0	16.9	103.9	5.8
1981	46.1	4.2	50.3	36.7	13.6	50.4	82.8	17.9	100.7	5.5
1982	55.1	7.1	62.3	33.9	13.9	47.8	89.0	21.1	110.1	6.0
1983	86.5	6.0	92.5	52.9	17.8	70.7	139.4	23.8	163.2	8.9
1984	68.8	6.3	75.2	39.5	15.2	54.8	108.4	21.6	129.9	7.0
1985	60.1	5.9	66.0	35.0	16.2	51.2	94.8	22.1	117.2	6.2
1986	66.4	8.1	74.5	38.7	19.5	58.2	105.1	27.6	132.7	6.7
1987	56.6	8.1	64.7	35.8	21.5	57.3	92.4	29.6	122.0	5.9
1988	51.1	6.2	57.3	39.0	19.0	58.0	90.2	25.2	115.3	5.6

**UNEMPLOYMENT RATES, VICTORIA AND AUSTRALIA**  
(August)



**TABLE 3.3 UNEMPLOYED PERSONS, BY AGE AND SEX, VICTORIA ('000)**

August	Age group (years)											
	15 to 19			20-24			25 and over			Total		
	Males	Females	Persons	Males	Females	Persons	Males	Females	Persons	Males	Females	Persons
1968	*3.6	*2.6	6.5	*1.6	*2.0	*3.6	4.8	6.8	11.6	10.2	11.4	21.6
1969	*2.0	*3.1	5.0	*1.0	*2.1	*3.1	4.9	4.5	9.4	7.8	9.6	17.5
1970	*2.0	*2.2	4.2	*1.6	*0.9	*2.5	4.7	4.4	9.2	8.4	7.5	16.0
1971	*1.6	*2.6	4.2	*3.0	*1.7	4.7	7.3	5.1	12.5	11.9	9.5	21.4
1972	6.4	*3.9	10.2	*3.3	*3.3	6.6	10.3	10.4	20.6	20.0	17.5	37.5
1973	5.5	4.0	9.5	4.0	*2.0	6.1	5.4	8.0	13.5	15.0	14.1	29.0
1974	4.2	5.8	9.9	*2.8	*3.9	6.8	10.9	13.6	24.5	18.0	23.3	41.3
1975	9.4	15.7	25.1	6.7	6.2	12.9	21.0	19.1	40.0	37.0	40.9	77.9
1976	11.8	12.2	24.0	7.5	6.0	13.6	15.9	17.1	33.0	35.2	35.4	70.6
1977	13.5	19.2	32.7	6.4	9.5	15.9	22.0	19.4	41.4	41.9	48.1	90.0
1978	15.8	16.4	32.3	10.8	10.1	20.9	25.1	22.6	47.6	51.7	49.1	100.8
1979	13.5	16.9	30.4	10.2	8.0	18.2	25.7	21.4	47.1	49.4	46.3	95.7
1980	15.4	16.0	31.3	14.3	10.6	24.9	23.0	24.1	47.1	52.7	50.6	103.3
1981	13.6	16.7	30.5	11.8	10.5	22.3	24.7	23.2	47.8	50.3	50.4	100.7
1982	18.3	13.4	31.8	15.2	9.6	24.8	28.7	24.8	53.5	62.3	47.8	110.1
1983	20.4	24.0	44.3	20.3	13.8	34.0	51.9	33.0	84.9	92.5	70.7	163.2
1984	18.8	18.7	37.4	15.6	12.0	27.6	40.8	24.1	65.0	75.2	54.8	129.9
1985	17.5	14.6	32.2	12.8	11.1	23.9	35.6	25.5	61.1	66.0	51.2	117.2
1986	21.1	16.9	38.0	14.9	11.1	26.0	38.5	30.2	68.7	74.5	58.2	132.7
1987	16.1	16.7	32.8	11.1	12.6	23.8	37.5	27.9	65.4	64.7	57.3	122.0
1988	13.6	15.1	28.7	12.3	12.0	24.2	31.5	30.9	62.4	57.3	58.0	115.3

**TABLE 3.4 YOUTH UNEMPLOYMENT: UNEMPLOYED PERSONS AGED 15-19 YEARS BY DURATION OF UNEMPLOYMENT AND SCHOOL ATTENDANCE VICTORIA, AUGUST 1988**

Particulars	Males	Females	Persons
	Number ('000)		
Duration of unemployment -			
Under 13 weeks	7.5	7.7	15.2
13 weeks and under 52	5.5	5.2	10.7
52 weeks and over	*0.6	*2.3	*2.9
<b>Total</b>	<b>13.6</b>	<b>15.1</b>	<b>28.7</b>
	Duration of unemployment (weeks)		
Average mean duration	19.2	23.3	21.4
Median duration	*12.0	*11.0	11.0
	Number ('000)		
School attendance			
Attending -	*3.7	5.0	8.7
Not attending -			
Left before 1987	5.4	5.3	10.7
Left from 1987 to survey date	4.5	4.8	9.3
<b>Total</b>	<b>13.6</b>	<b>15.1</b>	<b>28.7</b>





Figure 7(a). Labour force regions, Victoria



Figure 7(b). Labour force regions, Melbourne Statistical Division

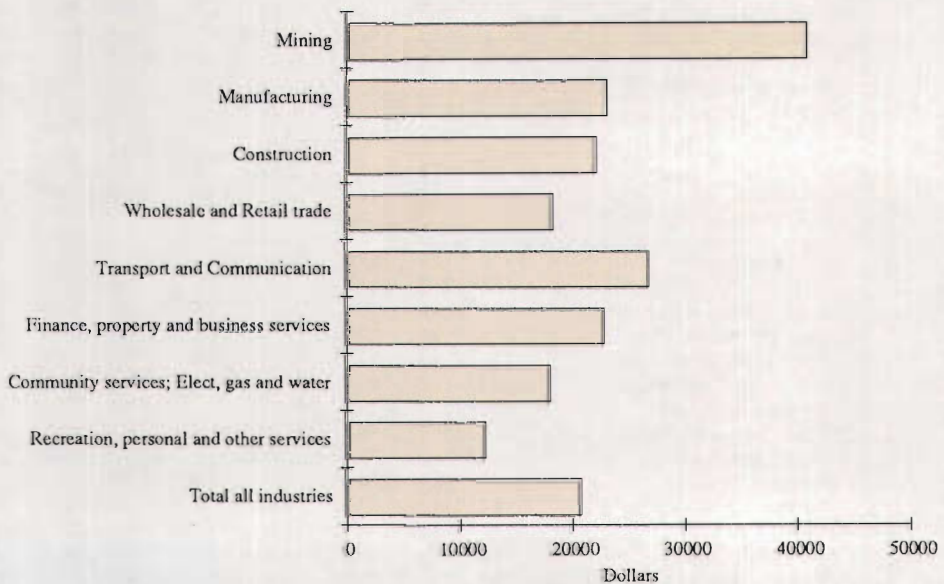
TABLE 3.5 CIVILIAN POPULATION AGED 15 YEARS AND OVER BY LABOUR FORCE STATUS, VICTORIAN REGIONS, AUGUST 1988

Region	Employed			Unemp- loyed ('000)	Labour force ('000)	Not in labour force ('000)	Unemp- loyment rate (Per cent)	Partici- pation rate
	Full- time ('000)	Parti- time ('000)	Total ('000)					
<b>MALES</b>								
Melbourne Statistical Division -	775.1	54.2	829.3	33.7	863.0	300.7	3.9	74.2
Outer Western Melbourne	108.9	6.0	114.8	6.8	121.7	44.2	5.6	73.4
North Western Melbourne	66.3	5.2	71.5	*3.2	74.8	24.3	*4.3	75.5
Inner Melbourne	54.0	8.4	62.4	4.8	67.3	24.3	7.2	73.5
North Eastern Melbourne	99.1	6.9	106.0	*4.0	110.0	35.3	*3.6	75.7
Inner Eastern Melbourne	118.8	9.6	128.3	*3.8	132.1	47.5	*2.9	73.5
Southern Melbourne	94.2	6.0	100.2	*3.0	103.2	48.2	*2.9	68.2
Outer Eastern Melbourne	112.2	6.0	118.2	*2.3	120.4	31.2	*1.9	79.4
Mornington Peninsula	121.7	6.0	127.7	5.8	133.6	45.8	4.4	74.5
Balance of Victoria -	295.2	21.4	316.6	23.6	340.2	132.5	6.9	72.0
South Western Victoria	74.9	5.4	80.3	7.1	87.4	34.0	8.2	72.0
Western Victoria	61.1	*4.0	65.1	6.2	71.3	31.4	8.6	69.4
Northern Victoria	95.5	7.2	102.7	5.8	108.5	41.5	5.4	72.3
Eastern Victoria	63.8	4.8	68.5	4.5	73.0	25.5	6.2	74.1
<b>Total</b>	<b>1,070.3</b>	<b>75.6</b>	<b>1,145.9</b>	<b>57.3</b>	<b>1,203.2</b>	<b>433.1</b>	<b>4.8</b>	<b>73.5</b>
<b>MARRIED FEMALES</b>								
Melbourne Statistical Division -	186.7	149.9	336.6	14.1	350.7	344.8	4.0	50.4
Outer Western Melbourne	28.4	18.0	46.4	*2.7	49.1	56.5	*5.5	46.5
North Western Melbourne	18.3	9.0	27.2	*4.1	31.3	28.2	*13.0	52.6
Inner Melbourne	11.2	*2.3	13.6	*0.0	13.6	16.3	*0.0	45.5
North Eastern Melbourne	23.1	20.5	43.6	*1.3	44.9	42.6	*2.9	51.3
Inner Eastern Melbourne	27.8	26.5	54.3	*0.8	55.0	53.4	*1.4	50.8
Southern Melbourne	21.8	18.8	40.6	*1.8	42.3	40.9	*4.1	50.8
Outer Eastern Melbourne	29.0	27.2	56.3	*2.0	58.3	45.4	*3.5	56.2
Mornington Peninsula	27.1	27.5	54.7	*1.5	56.2	61.6	*2.6	47.7
Balance of Victoria -	66.6	71.1	137.6	9.4	147.0	150.1	6.4	49.5
South Western Victoria	16.0	20.4	36.4	*1.8	38.2	38.4	*4.7	49.9
Western Victoria	14.7	13.3	28.0	*1.5	29.6	29.1	*5.2	50.4
Northern Victoria	22.3	23.1	45.5	*4.2	49.7	50.6	*8.5	49.5
Eastern Victoria	13.5	14.2	27.7	*1.8	29.6	32.1	*6.2	48.0
<b>Total</b>	<b>253.2</b>	<b>221.0</b>	<b>474.2</b>	<b>23.5</b>	<b>497.7</b>	<b>494.9</b>	<b>4.7</b>	<b>50.1</b>
<b>ALL FEMALES</b>								
Melbourne Statistical Division -	370.9	214.7	585.6	35.5	621.1	596.9	5.7	51.0
Outer Western Melbourne	49.3	23.7	73.0	6.5	79.5	87.6	8.2	47.6
North Western Melbourne	35.7	13.8	49.5	6.3	55.8	51.2	11.3	52.2
Inner Melbourne	37.8	9.4	47.2	*2.0	49.2	41.9	*4.0	54.0
North Eastern Melbourne	46.5	27.6	74.1	*3.9	78.0	77.6	*5.0	50.1
Inner Eastern Melbourne	58.0	41.8	99.8	*4.4	104.2	91.9	*4.2	53.1
Southern Melbourne	49.2	25.3	74.5	*3.2	77.7	78.0	*4.2	49.9
Outer Eastern Melbourne	48.9	39.2	88.2	*3.3	91.5	74.3	*3.6	55.2
Mornington Peninsula	45.6	33.8	79.4	5.9	85.3	94.4	6.9	47.5
Balance of Victoria -	115.6	88.4	204.0	22.5	226.6	252.4	9.9	47.3
South Western Victoria	28.1	25.2	53.3	6.0	59.2	63.1	10.1	48.4
Western Victoria	27.6	16.7	44.3	5.2	49.4	51.0	10.4	49.2
Northern Victoria	36.2	28.8	65.0	7.9	72.9	84.0	10.8	46.5
Eastern Victoria	23.7	17.8	41.5	*3.5	45.0	54.3	*7.9	45.3
<b>Total</b>	<b>486.6</b>	<b>303.1</b>	<b>789.7</b>	<b>58.0</b>	<b>847.7</b>	<b>849.3</b>	<b>6.8</b>	<b>50.0</b>

**TABLE 3.5 CIVILIAN POPULATION AGED 15 YEARS AND OVER BY LABOUR FORCE STATUS, VICTORIAN REGIONS, AUGUST 1988 - continued**

Region	Employed			Unemp- loyed ( <sup>'000</sup> )	Labour force ( <sup>'000</sup> )	Not in labour force ( <sup>'000</sup> )	Unemp- loyment rate (Per cent)	Partici- pation rate
	Full- time ( <sup>'000</sup> )	Part- time ( <sup>'000</sup> )	Total ( <sup>'000</sup> )					
<b>PERSONS</b>								
Melbourne Statistical Division -	1,146.0	368.9	1,414.9	69.2	1,484.1	897.5	4.7	62.3
Outer Western Melbourne	158.2	29.7	187.9	13.3	201.2	131.8	6.6	60.4
North Western Melbourne	102.0	19.0	121.0	9.5	130.5	75.5	7.3	63.4
Inner Melbourne	91.8	17.8	109.6	6.8	116.4	66.1	5.8	63.8
North Eastern Melbourne	145.6	34.6	180.1	7.8	188.0	112.9	4.2	62.5
Inner Eastern Melbourne	176.7	51.4	228.1	8.2	236.3	139.4	3.5	62.9
Southern Melbourne	143.3	31.3	174.7	6.2	180.9	126.2	3.5	58.9
Outer Eastern Melbourne	161.1	45.2	206.4	5.6	211.9	105.5	2.6	66.8
Mornington Peninsula	167.3	39.9	207.1	11.7	218.9	140.2	5.4	61.0
Balance of Victoria -	410.9	109.8	520.6	46.2	566.8	384.9	8.1	59.6
South Western Victoria	103.0	30.6	133.5	13.1	146.6	97.1	8.9	60.1
Western Victoria	88.7	20.7	109.4	11.3	120.7	82.4	9.4	59.4
Northern Victoria	131.7	36.0	167.7	13.7	181.4	125.5	7.6	59.1
Eastern Victoria	87.5	22.5	110.0	8.0	118.1	79.8	6.8	59.7
<b>Total</b>	<b>1,556.9</b>	<b>378.6</b>	<b>1,935.5</b>	<b>115.3</b>	<b>2,050.9</b>	<b>1,282.4</b>	<b>5.6</b>	<b>61.5</b>

**MAJOR LABOUR COSTS PER EMPLOYEE BY INDUSTRY, VICTORIA, 1986-87**



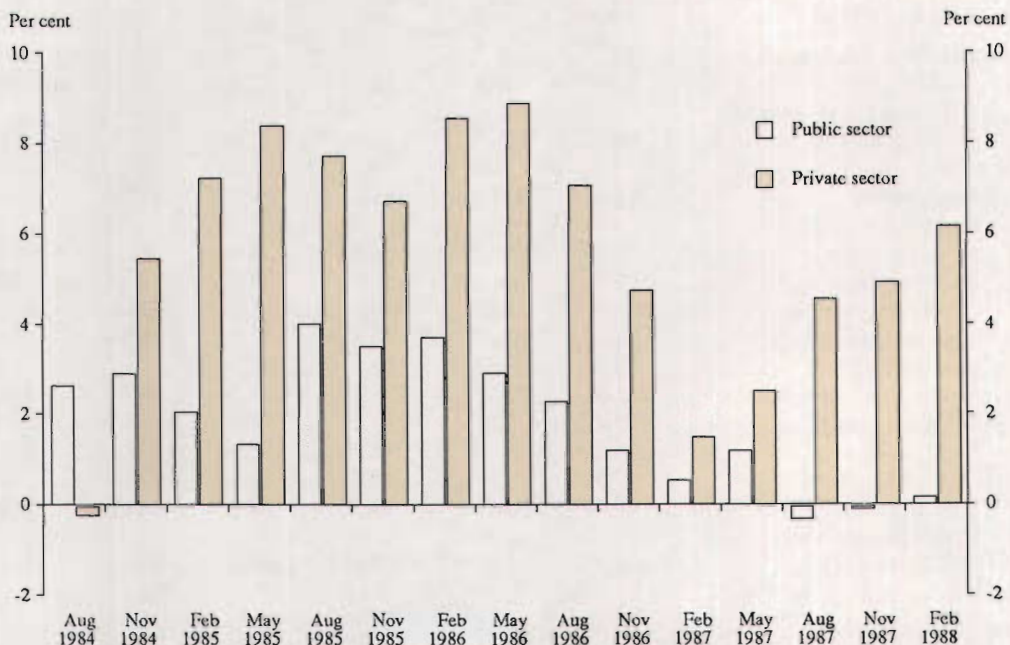
**TABLE 3.6 EMPLOYED WAGE AND SALARY EARNERS BY INDUSTRY, VICTORIA**  
 ('000)

Industry division or subdivision	August					
	1983	1984	1985	1986	1987	1988
Agriculture, forestry, fishing, and hunting - Agriculture, and services to agriculture	23.9	29.4	28.1	22.8	24.2	20.3
Mining	5.8	5.1	5.8	5.2	7.5	5.4
Manufacturing - Food, beverages, and tobacco	371.0	373.5	381.2	354.9	372.9	388.4
Metal products	55.1	50.2	54.0	41.4	52.5	48.3
Other manufacturing	50.4	44.5	43.0	42.2	47.5	48.2
Electricity, gas, and water	265.5	278.8	284.2	271.3	272.9	291.9
Construction	34.3	44.7	40.1	40.4	33.6	33.9
Wholesale and retail trade - Wholesale trade	57.2	56.5	68.4	77.7	76.8	79.9
Retail trade	252.6	267.5	278.1	277.0	296.4	318.0
Transport and storage	77.4	81.1	99.8	90.6	98.9	109.6
Communication	175.2	186.5	178.3	186.4	197.6	208.5
Finance, property, and business services	79.5	71.9	69.8	80.4	78.0	73.5
Public administration and defence	40.3	34.8	36.5	38.5	39.9	34.7
Community services	126.6	135.9	145.8	168.8	174.6	187.2
Recreation, personal, and other services	84.3	80.5	89.1	88.0	96.3	85.9
<b>Total employed</b>	268.7	286.6	297.6	312.1	342.3	323.6
	72.3	76.6	74.6	71.2	89.6	80.0
	1,416.2	1,463.0	1,515.1	1,537.0	1,632.3	1,630.8

**TABLE 3.7 EMPLOYED WAGE AND SALARY EARNERS BY SECTOR: VICTORIA**  
 ('000)

	Commonwealth Government	State Government	Local Government	Total Public sector	Private sector	Total
1985 -						
February	101.5	r287.6	39.3	r428.4	r1,016.3	1,444.7
May	101.9	r295.1	40.3	r437.3	r1,027.8	1,465.2
August	100.6	r305.9	41.8	r448.3	r1,037.2	1,485.6
November	101.2	r305.1	41.8	r448.2	r1,068.3	1,516.4
1986 -						
February	101.6	r301.2	41.7	r444.5	r1,103.7	1,548.1
May	103.3	r305.0	41.9	r450.3	r1,119.6	1,569.9
August	102.1	r313.8	42.8	r458.7	r1,111.0	1,569.7
November	100.4	r310.5	42.8	r453.7	r1,119.6	1,573.3
1987 -						
February	101.1	r303.3	42.7	r447.1	r1,120.5	1,567.7
May	99.9	r312.7	43.2	r455.8	r1,148.2	1,604.0
August	99.8	313.5	44.0	457.2	1,162.2	1,619.4
November	98.5	310.9	43.9	453.2	1,186.4	1,639.7
1988 -						
February	99.4	304.7	43.8	448.0	1,194.6	1,642.5

**GROWTH IN THE NUMBER OF EMPLOYEES, SECTORS, VICTORIA, YEARS ENDING AUGUST 1984 TO FEBRUARY 1988**



**GROWTH IN THE NUMBER OF EMPLOYEES IN THE PUBLIC SECTOR, VICTORIA, YEARS ENDING AUGUST 1984 TO FEBRUARY 1988**

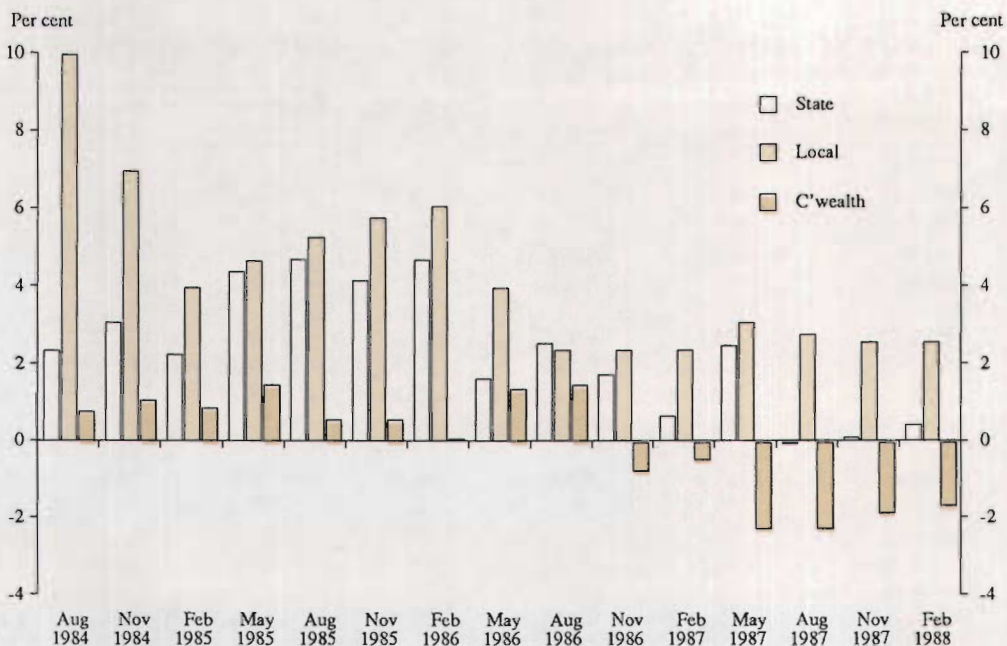


TABLE 3.8 EMPLOYED PERSONS: INDUSTRY BY OCCUPATION, VICTORIA, AUGUST 1988  
( '000)

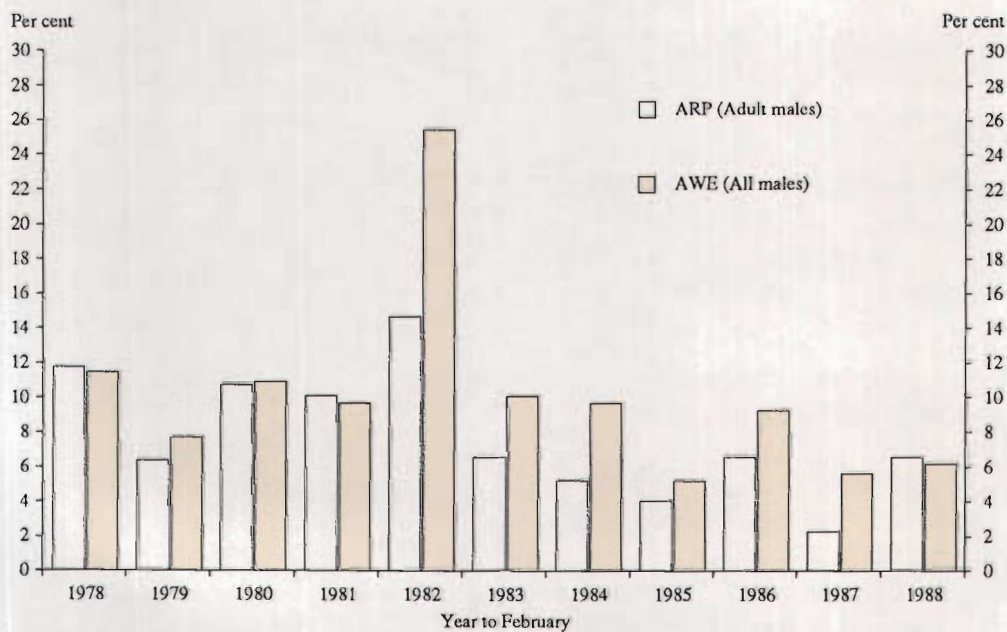
Industry division or sub-division	Occupation group								Total
	Managers and administrators	Professionals	Para- professionals	Trades persons	Clerks	Salespersons and personal service workers	Plant and machine operators and drivers	Labourers and related workers	
<b>Agriculture, forestry, fishing, and hunting -</b>	<b>70.4</b>	<b>*0.8</b>	<b>*1.3</b>	<b>*3.7</b>	<b>*1.5</b>	<b>*0.3</b>	<b>*1.8</b>	<b>15.3</b>	<b>95.2</b>
Agriculture and services to agriculture	70.4	*0.8	*0.8	*3.7	*1.3	*0.3	*1.5	13.8	92.6
Mining	*0.3	*0.3	*0.3	*0.8	*1.0	*0.0	*1.8	*1.3	5.7
<b>Manufacturing -</b>	<b>29.3</b>	<b>22.2</b>	<b>9.7</b>	<b>113.5</b>	<b>44.5</b>	<b>11.7</b>	<b>89.6</b>	<b>88.2</b>	<b>408.7</b>
Food, beverages, and tobacco	*2.8	*1.5	*2.1	11.0	5.3	4.8	8.3	13.1	49.1
Metal products	*2.9	*1.0	*1.6	20.0	*4.4	*0.8	10.4	10.1	51.0
Other manufacturing	23.6	19.6	6.0	82.5	34.9	6.1	70.9	65.0	308.7
Electricity, gas, and water	*0.5	*3.9	*3.4	9.1	8.6	*0.5	*4.3	*3.6	33.9
Construction	13.1	*1.3	*3.3	68.5	16.5	*0.3	9.4	20.3	132.5
<b>Wholesale and retail trade -</b>	<b>70.5</b>	<b>12.4</b>	<b>*3.0</b>	<b>56.6</b>	<b>46.7</b>	<b>134.0</b>	<b>16.3</b>	<b>43.1</b>	<b>382.5</b>
Wholesale trade	24.0	6.3	*1.5	14.2	26.1	20.8	11.4	16.3	120.6
Retail trade	46.4	6.1	*1.5	42.4	20.6	113.3	4.9	26.8	261.9
Transport and storage	5.5	*3.9	*2.6	6.8	15.5	8.1	35.2	12.6	90.1
Communication	*1.8	*2.3	*2.8	9.0	15.6	*0.3	*0.8	*2.3	35.0
Finance, property, and business services	18.7	47.3	7.3	*1.6	82.0	39.8	*2.3	16.3	215.4
Public administration and defence	4.9	16.6	9.8	5.2	26.6	5.1	5.2	12.6	85.9
Community services	9.8	135.8	54.9	10.9	48.3	32.3	5.5	42.6	340.0
Recreation, personal, and other services	18.8	12.4	*4.2	21.6	8.2	21.7	*1.8	22.3	111.0
<b>Total employed</b>	<b>243.5</b>	<b>259.0</b>	<b>102.6</b>	<b>307.2</b>	<b>315.0</b>	<b>254.0</b>	<b>173.9</b>	<b>280.3</b>	<b>1,935.5</b>

LABOUR

**TABLE 3.9 AVERAGE WEEKLY HOURS WORKED BY EMPLOYED WAGE AND SALARY EARNERS BY INDUSTRY, VICTORIA**  
(hours)

Industry division or subdivision	August					
	1983	1984	1985	1986	1987	1988
Agriculture and services to agriculture	36.0	39.2	39.4	39.5	37.5	38.7
Mining	38.4	34.1	41.6	41.0	42.7	37.4
Manufacturing -	36.8	37.4	37.6	38.1	37.7	38.5
Food, beverage, and tobacco	36.3	37.5	36.8	38.1	35.3	37.6
Metal products	37.7	37.6	38.0	39.2	39.5	39.8
Other manufacturing	36.8	37.4	37.6	37.9	37.9	38.4
Electricity, gas, and water	36.3	34.4	35.2	36.6	36.7	33.0
Construction	36.0	37.3	36.3	38.1	38.0	36.7
Wholesale and retail trade -	33.1	33.8	33.4	34.0	32.7	32.9
Wholesale trade	38.2	38.2	38.5	38.7	39.2	38.7
Retail trade	30.8	31.3	30.5	31.7	29.5	29.9
Transport and storage	38.1	37.3	38.0	38.2	38.4	38.9
Communication	31.0	33.9	34.8	34.1	33.1	34.1
Finance, property, and business services	35.3	34.6	36.6	37.4	35.4	35.9
Public administration and defence	33.1	35.0	31.6	32.9	31.9	33.8
Community services	33.6	33.6	31.9	32.3	32.4	32.6
Recreation, personal, and other services	29.6	32.4	29.8	31.1	29.7	31.1
<b>Total</b>	<b>34.7</b>	<b>35.1</b>	<b>34.7</b>	<b>35.4</b>	<b>34.6</b>	<b>35.1</b>

**AWARD RATES OF PAY AND AVERAGE WEEKLY EARNINGS:  
ANNUAL CHANGE, VICTORIA**



**TABLE 3.10 AVERAGE WEEKLY EARNINGS: FULL TIME ADULT EMPLOYEES BY INDUSTRY, VICTORIA**  
(\$)

Industry	February 1986			February 1987			February 1988		
	Males	Females	Persons	Males	Females	Persons	Males	Females	Persons
Mining	625.90	462.40	614.80	670.70	439.20	651.80	770.00	574.70	754.90
Manufacturing -									
Food, beverage, and tobacco	419.80	324.60	395.80	475.90	331.10	431.10	516.60	386.50	478.90
Textile, clothing, and footwear	395.70	282.70	326.30	444.00	314.50	373.40	504.30	309.00	390.10
Paper, paper products, printing and publishing	489.60	323.40	432.40	491.50	350.20	458.50	583.10	389.70	531.20
Chemical, petroleum, and coal products	473.60	349.40	438.90	557.30	379.80	510.00	602.30	427.60	558.10
Metal products, machinery, and equipment -									
Basic metal products	502.70	411.90	492.90	544.00	400.70	528.40	607.30	427.70	586.70
Fabricated metal products, other machinery, etc.	432.40	328.00	409.90	458.30	320.60	425.70	500.20	364.00	462.50
Transport equipment	441.60	309.40	422.30	464.10	336.30	444.50	525.30	354.30	495.70
Total metal products etc.	442.30	326.10	421.50	468.40	328.60	440.90	521.00	364.30	485.70
Other manufacturing	437.80	306.40	393.80	470.50	330.90	424.60	519.90	353.20	463.50
<b>Total manufacturing</b>	<b>439.90</b>	<b>311.80</b>	<b>405.30</b>	<b>469.50</b>	<b>330.20</b>	<b>431.60</b>	<b>520.40</b>	<b>356.80</b>	<b>472.90</b>
Electricity, gas, and water	497.60	370.70	486.00	522.60	386.30	510.30	553.60	415.50	540.50
Construction	435.70	293.90	421.30	502.70	298.40	482.00	536.80	395.90	523.00
Wholesale trade	443.90	358.20	421.10	483.40	390.10	458.80	489.90	388.30	461.60
Retail trade	337.80	303.30	325.40	408.90	318.70	384.50	434.70	343.40	404.10
Transport and storage, communication	464.70	416.90	456.10	478.70	432.30	471.10	493.50	445.20	485.70
Finance, property and business services	486.50	363.90	438.60	560.30	401.40	500.70	628.20	433.50	550.50
Public administration, community services, etc.	496.90	418.50	459.50	523.70	445.50	485.60	574.00	478.40	525.40
Recreation, personal and other services	408.50	331.40	377.90	463.30	380.20	435.10	495.50	387.00	455.10
<b>Total all industries</b>	<b>454.50</b>	<b>367.00</b>	<b>426.40</b>	<b>490.20</b>	<b>393.70</b>	<b>459.90</b>	<b>531.30</b>	<b>420.10</b>	<b>494.10</b>

LABOUR



**TABLE 3.11 WEEKLY EARNINGS OF ALL WAGE AND SALARY EARNERS WHO WORKED FULL TIME, IN ALL JOBS BY AGE, VICTORIA, AUGUST 1987 ('000)**

Weekly earnings (\$)	Age group (years)							Total
	15-19	20-24	25-34	35-44	45-54	55 and over	20 and over	
Under 120	4.9	*1.8	*2.7	*2.5	*1.9	*0.7	9.6	14.5
120 and under 160	17.8	*3.2	*2.5	*2.4	*1.3	*0.7	10.1	27.9
160 and under 200	20.9	6.3	4.3	*2.4	*1.8	*2.4	17.1	38.0
200 and under 240	24.2	16.4	7.4	10.6	5.1	*3.6	43.1	67.3
240 and under 280	13.8	35.4	23.4	16.7	11.5	9.0	95.9	109.8
280 and under 320	8.2	50.9	43.9	30.8	23.8	14.0	163.3	171.5
320 and under 360	*3.3	42.6	50.3	39.6	26.2	15.0	173.8	177.1
360 and under 400	*1.7	25.1	42.8	33.7	19.6	14.1	135.3	137.0
400 and under 440	*1.0	16.7	44.0	29.0	17.6	8.9	116.2	117.2
440 and under 480	*0.7	10.4	31.6	16.5	9.1	*3.6	71.2	71.9
480 and under 520	*0.2	5.9	35.6	23.2	14.8	7.5	86.9	87.1
520 and under 560	*0.7	*3.5	27.2	23.5	14.2	6.4	74.7	75.3
560 and under 600	*0.4	*2.9	19.5	16.7	5.9	5.0	49.9	50.3
600 and under 640	*0.0	*2.2	10.9	14.8	8.2	*4.2	40.3	40.3
640 and under 680	*0.0	*1.2	5.5	9.9	4.6	*1.3	22.4	22.4
680 and under 720	*0.0	*0.8	8.4	8.4	4.8	*1.4	23.8	23.8
720 and under 760	*0.0	*0.5	4.9	5.2	*3.4	*1.1	15.0	15.0
760 and under 800	*0.2	*0.5	6.4	5.8	4.6	*1.4	18.7	19.0
800 and over	*0.0	*0.8	7.9	12.6	9.3	*3.4	34.0	34.0
<b>Total</b>	<b>98.1</b>	<b>226.9</b>	<b>379.1</b>	<b>304.3</b>	<b>187.6</b>	<b>103.6</b>	<b>1,201.4</b>	<b>1,299.5</b>
Mean weekly earnings (\$)	219	338	436	460	458	421	426	410

**Industrial disputes** Following a large number of working days lost in Victoria due to industrial disputes in 1981, the number of days lost remained relatively stable between 1982 and 1987. The main features of 1987 were major disputes, relating to second tier wage claims, in the Manufacturing, Transport and storage and Communication sectors. In August/September 1987 there was also a dispute by teachers over budget cuts.

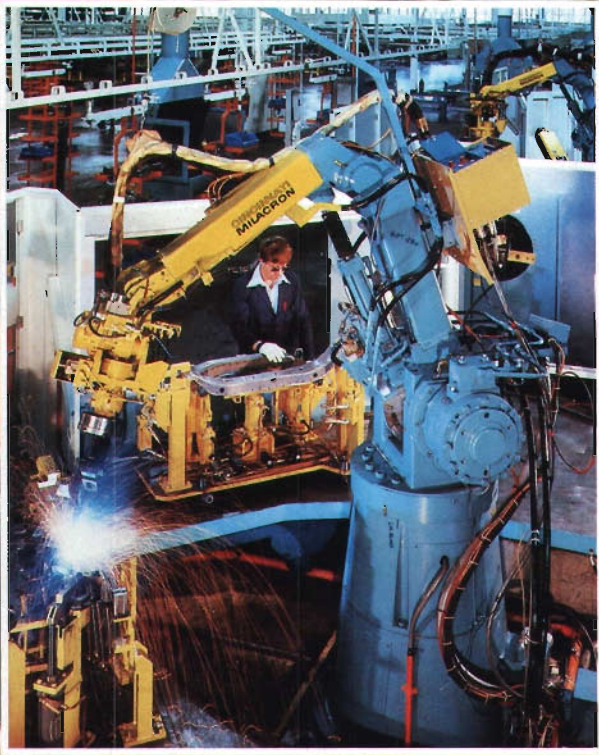
**Trade union membership** Total reported membership of trade unions at August 1986 was 695,600 or 46 per cent of all employees. Sixty-four per cent of trade unionists were male. Approximately 50 per cent of male employees belonged to a trade union compared with 40 per cent of female employees. The Communication industry had the highest concentration of trade union membership with 78 per cent of all employees being a member of a trade union. The Agriculture, forestry, fishing, and hunting industry was the lowest with only 15 per cent of employees being members of a trade union. The Manufacturing industry, which has the largest number of employees (358,100), had 186,500 (52 per cent) who were members of a trade union.

**LABOUR**

Background: The city workforce - *Board of Works*.

Inset: (Top) Ford assembly plant at Geelong - *Department of Industry, Technology and Resources*.

(Below) Female apprentice motor mechanic - *State Training Board of Victoria*.





**TABLE 3.12 INDUSTRIAL DISPUTES: INDUSTRIES, WORKING DAYS LOST, VICTORIA ('000)**

Period	Manufacturing			Construction	Transport, storage and communication	Other industries	All industries
	Mining	Metal products, machinery, and equipment	Other				
1981	22.2	474.7	280.9	106.2	163.3	188.2	1,235.5
1982	4.5	65.2	187.5	60.6	8.0	42.2	368.0
1983	8.8	31.0	43.4	47.2	53.5	73.8	257.7
1984	2.9	40.9	78.9	17.0	13.3	33.3	186.4
1985	5.7	36.1	56.7	47.3	67.5	142.7	355.9
1986	-	58.4	85.2	34.9	11.3	192.0	381.8
1987	0.2	71.6	89.8	12.8	55.3	59.8	289.3
1988 -							
January	-	-	1.2	-	-	0.3	1.6
February	-	2.6	3.5	0.1	0.4	2.8	9.5
March	-	1.3	2.7	2.5	2.4	4.4	13.2
April	-	1.0	0.2	-	0.4	10.2	11.9

**TABLE 3.13 ALL EMPLOYEES: INDUSTRY, FULL-TIME OR PART-TIME STATUS IN MAIN JOB, SECTOR, AND WHETHER A MEMBER OF A TRADE UNION, VICTORIA, AUGUST 1986 ('000)**

Industry	Males			Females			Persons		
	Full-time	Part-time	Total (a)	Full-time	Part-time	Total (a)	Total (a)	Public	Private (b)
<b>MEMBER OF A TRADE UNION</b>									
Agriculture, forestry, fishing and hunting	*1.9	*0.0	*2.2	*0.4	*0.2	*0.7	*2.8	*0.4	*2.4
Mining	*1.7	*0.5	*2.5	*0.0	*0.0	*0.0	*2.5	*0.3	*2.2
Manufacturing	109.9	17.5	132.6	40.2	12.1	53.9	186.5	8.8	177.7
Electricity, gas, and water	22.2	6.2	30.0	*0.9	*0.7	*1.6	31.6	31.0	*0.7
Construction	29.6	6.8	37.8	*0.3	*0.2	*0.5	38.3	4.7	33.7
Wholesale and retail trade	26.4	9.9	37.9	16.6	17.7	36.9	74.9	*1.1	73.7
Transport and storage	38.5	7.3	49.3	4.8	*0.9	6.8	56.1	33.0	23.2
Communication	17.2	4.2	23.6	4.9	*1.1	6.7	30.4	30.4	*0.0
Finance, property, and business services	21.5	*2.7	24.9	18.9	6.1	26.4	51.3	14.3	37.0
Public administration and defence	26.6	6.6	36.6	9.4	4.7	14.3	50.9	50.0	*0.9
Community services	49.9	6.1	58.8	54.2	31.9	93.8	152.6	128.7	23.8
Recreation, personal and other services	7.4	*2.1	9.9	*3.4	*3.8	7.7	17.7	*3.2	14.5
<b>Total</b>	<b>352.8</b>	<b>70.0</b>	<b>446.2</b>	<b>154.2</b>	<b>79.5</b>	<b>249.4</b>	<b>695.6</b>	<b>305.8</b>	<b>389.7</b>

**SOCIAL**

Background: Lygon Street Festa, held in Lygon Street Carlton in the first week following the Melbourne Cup - *Victorian Ethnic Affairs Commission*.

Inset: (Top) Migrant children - *Victorian Ethnic Affairs Commission*.

(Centre) The Magnetic Resonance Imaging (MRI) Unit, installed at the Royal Melbourne Hospital's Radiology Department. - *Royal Melbourne Hospital*.

(Below) Working with computers at primary schools - *Ministry of Education*

**TABLE 3.13 ALL EMPLOYEES: INDUSTRY, FULL-TIME OR PART-TIME STATUS IN MAIN JOB, SECTOR, AND WHETHER A MEMBER OF A TRADE UNION, VICTORIA, AUGUST 1986 - continued**  
(\*000)

Industry	Males			Females			Persons		
	Full-time	Part-time	Total (a)	Full-time	Part-time	Total (a)	Total (a)	Public	Private (b)
<b>NOT A MEMBER OF A TRADE UNION</b>									
Agriculture, forestry, fishing and hunting	10.7	*2.6	14.0	*1.8	*2.3	4.1	18.2	*0.7	17.4
Mining	*2.3	*0.0	*2.3	*0.5	*0.0	*0.5	*2.8	*0.0	*2.8
Manufacturing	95.8	12.5	110.9	32.6	21.3	55.2	166.1	*2.5	163.6
Electricity, gas, and water	5.9	*1.6	8.0	*1.2	*0.4	*1.8	9.8	9.6	*0.2
Construction	25.6	4.1	31.3	*2.6	4.9	7.8	39.0	*1.2	37.9
Wholesale and retail trade	93.8	15.3	114.9	42.4	33.2	79.7	194.6	*1.4	193.2
Transport and storage	12.6	*1.1	13.9	5.3	*2.3	7.6	21.5	*3.2	18.4
Communication	*3.5	*0.8	4.3	*2.7	*1.2	4.1	8.4	7.6	*0.8
Finance, property, and business services	44.8	7.2	52.8	36.4	17.5	55.7	108.5	6.7	101.8
Public administration and defence	13.5	4.4	18.8	8.3	9.3	18.4	37.2	36.8	*0.4
Community services	34.6	9.1	46.0	40.5	62.6	108.3	154.3	67.2	87.0
Recreation, personal, and other services	16.3	4.4	21.8	9.1	19.3	29.9	51.7	*2.5	49.2
<b>Total</b>	<b>359.3</b>	<b>63.1</b>	<b>438.9</b>	<b>183.4</b>	<b>174.2</b>	<b>373.1</b>	<b>812.0</b>	<b>139.4</b>	<b>672.7</b>
<b>TOTAL (c)</b>									
Agriculture, forestry, fishing and hunting	12.9	*2.6	16.4	*2.2	*2.6	4.8	21.2	*1.2	20.0
Mining	*4.0	*0.5	4.7	*0.5	*0.0	*0.5	5.2	*0.3	5.0
Manufacturing	208.9	31.0	247.6	74.0	33.7	110.5	358.1	11.3	346.8
Electricity, gas, and water	28.1	7.8	38.0	*2.1	*1.1	*3.5	41.4	40.5	*0.9
Construction	55.3	10.9	69.4	*2.9	5.1	8.2	77.6	5.9	71.8
Wholesale and retail trade	122.6	25.1	155.2	60.1	51.3	118.2	273.4	*2.8	270.6
Transport and storage	51.3	8.4	63.5	10.4	*3.2	14.9	78.3	36.3	42.0
Communication	20.7	4.9	27.9	7.9	*2.6	11.0	39.0	38.2	*0.8
Finance, property, and business services	67.6	9.9	79.0	56.5	23.7	83.2	162.3	21.0	141.3
Public administration and defence	40.6	11.2	56.1	18.1	14.0	33.2	89.2	87.9	*1.3
Community services	85.6	15.3	105.9	94.7	95.1	202.8	308.6	197.1	111.5
Recreation, personal, and other services	23.8	6.5	31.8	13.2	23.1	38.3	70.1	5.9	64.1
<b>Total</b>	<b>721.3</b>	<b>134.3</b>	<b>895.5</b>	<b>342.5</b>	<b>255.1</b>	<b>629.0</b>	<b>1,524.5</b>	<b>448.3</b>	<b>1,076.1</b>

(a) Includes persons for whom full-time or part-time status in main job could not be determined.

(b) Includes persons for whom sector could not be determined.

(c) Includes persons who did not know their membership status.

## REFERENCES

## Data sources

Currently, the ABS's principal sources of labour statistics are *household surveys* and *employer based surveys*. The ABS conducts a monthly household based labour force survey which provides estimates at a National, State and regional level. The major statistical indicators produced from the labour force survey are persons employed and unemployed, classified by age, sex, and marital status, expressed as a proportion of the civilian population aged 15 years and over.

Emphasis in the labour force survey is placed on the regular collection of data on demographic and labour force characteristics, but additional questions to investigate particular aspects of the labour force are frequently included.

At present the ABS conducts sample surveys of employers, based on the ABS register of businesses and organisations. Since May 1983 the ABS has introduced new or upgraded quarterly surveys of: employment and earnings; average weekly earnings; overtime; job vacancies; and an annual Survey of employee earnings and hours.

During 1987 the ABS developed a range of labour costs surveys which are designed to identify the composition and rate of growth of labour costs.

## ABS publications

- Statistical Maps, Victoria* (1103.2) (irregular)
- Monthly Summary of Statistics, Victoria* (1303.2)
- Monthly Summary of Statistics, Australia* (1304.0)
- Labour Statistics, Australia* (6101.0) (annual)
- The Labour Force, Australia, Preliminary* (6202.0) (monthly)
- The Labour Force, Victoria* (6202.2) (quarterly)
- The Labour Force, Australia* (6203.0) (monthly)
- The Labour Force, Australia, Historical Summary 1966 to 1989* (irregular)
- Labour Force Experience, Australia* (6206.0) (annual)
- Labour Mobility, Australia, Summary* (6208.0) (annual)
- Labour Mobility, Australia* (6209.0) (annual)
- Persons Not in the Labour Force, Australia* (6220.0) (annual)
- Job Search Experience of Unemployed Persons, Australia* (6222.0) (two yearly)
- Information Paper: Questionnaires Used in the Labour Force Survey, Australia* (6232.0)
- Employed Wage and Salary Earners, Australia* (6248.0) (quarterly)
- Information Paper: New Statistical Series: Employment, Average Weekly Earnings, Job Vacancies and Overtime* (6256.0)
- Information Paper: Victorian Labour Force Statistics* (6262.2)
- Average Weekly Earnings, States and Australia* (6302.0) (quarterly)
- Average Earnings and Hours of Employees, Australia* (6304.0) (annual)
- Weekly Earnings of Employees (Distribution), Australia* (6310.0) (annual)
- Award Rates of Pay Indexes, Australia* (6312.0) (monthly)
- Industrial Disputes, Australia (monthly)* (6321.0) (monthly)
- Industrial Disputes, Australia (quarterly)* (6322.0) (annual)
- Trade Union Statistics, Australia* (6323.0) (annual)
- Trade Union Members, Australia* (6325.0) (irregular)
- Major Labour Costs, Australia* (6348.0) (annual)